

Replacing Orifice with Needle valve

1. Remove the front panel for the ATS Machine.
2. Remove the fitting tray by removing the nuts that are under the tray



3. Remove the top tray by unscrewing all the screws that are on along the side of the tray, to get access to solenoid valves.



4. Unscrew the solenoid nut and take off solenoid



5. Remove the hose and the fitting from the solenoid



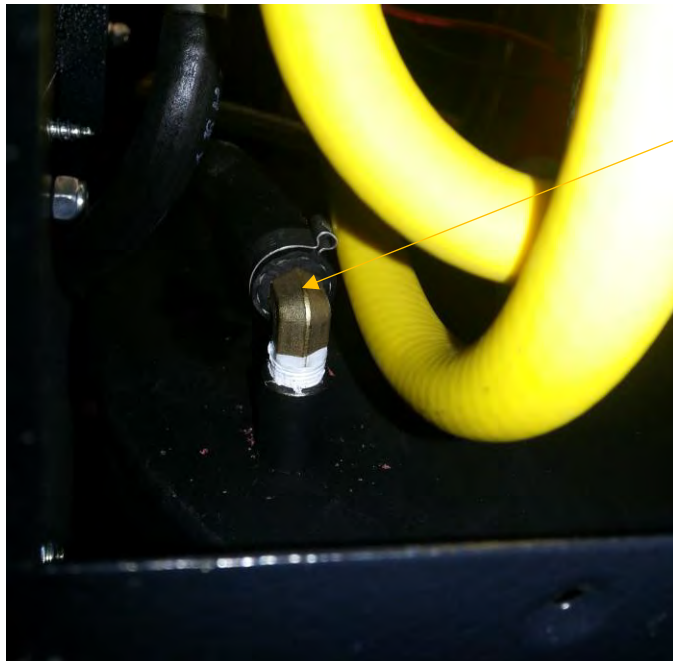
6. With crescent wrench turn the solenoid so it is sitting at angle so new needle valve won't hit anything.



7. Install the new needle valve and hose and crimp hose #7121



8. Lift Panel Below up to get to the fitting that is at the top of the tank so we can replace with new fitting.



Cut hose and remove this fitting at the top of the tank. And replace with the new one that is at the end of the hose that the needle valve is attached too.

10. Tighten Hose clamps at both ends of the new hose and put machine back together.

11. The needle valve now controls the flow. For more flow turn the needle counter clock wise. For less flow turn the needle clock wise.

If the machine is under draining turn the needle counter clock wise, this allows more oil to get out.

If the machine is over draining turn the needle clock wise. If you go too far it completely close it.