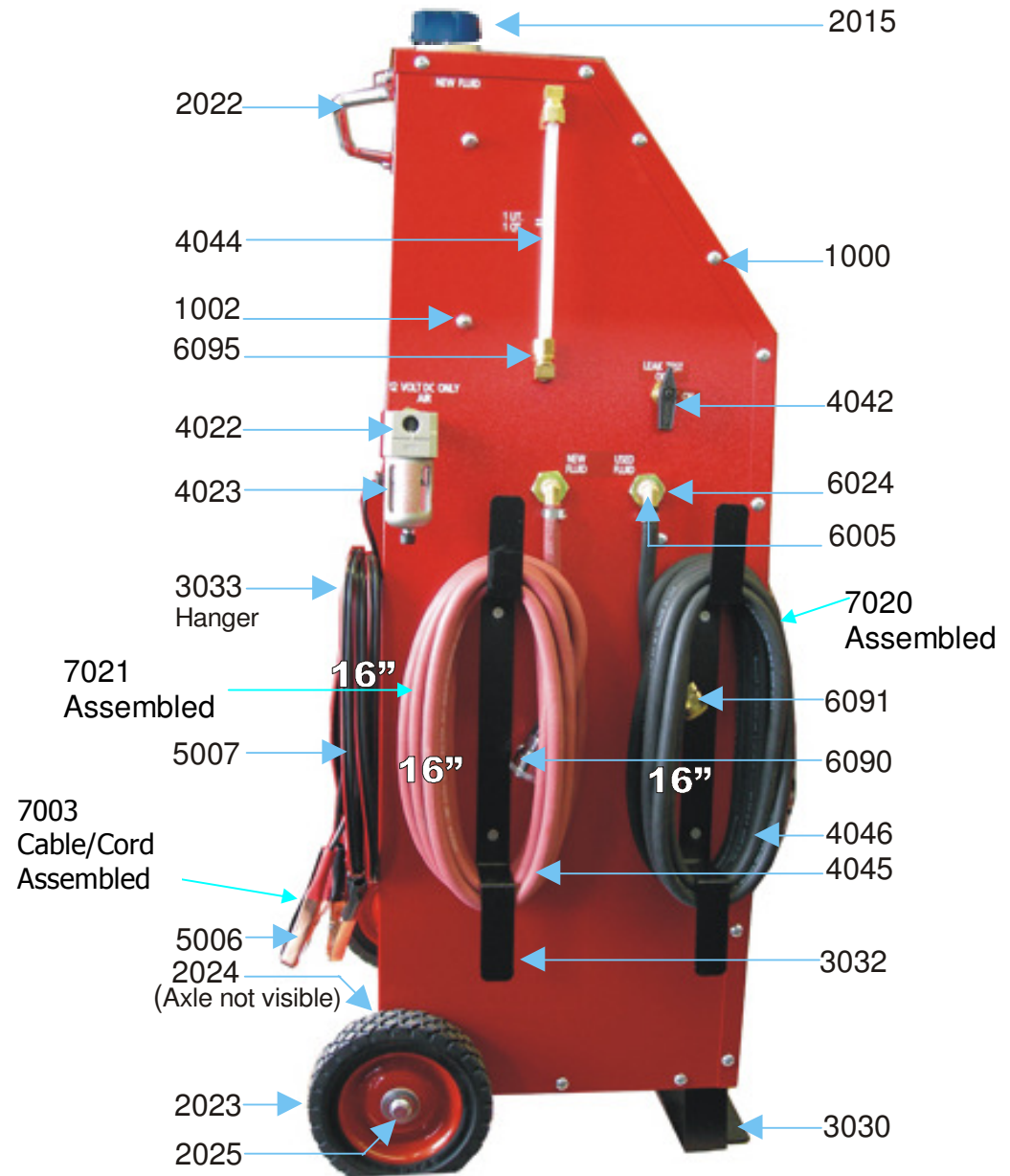
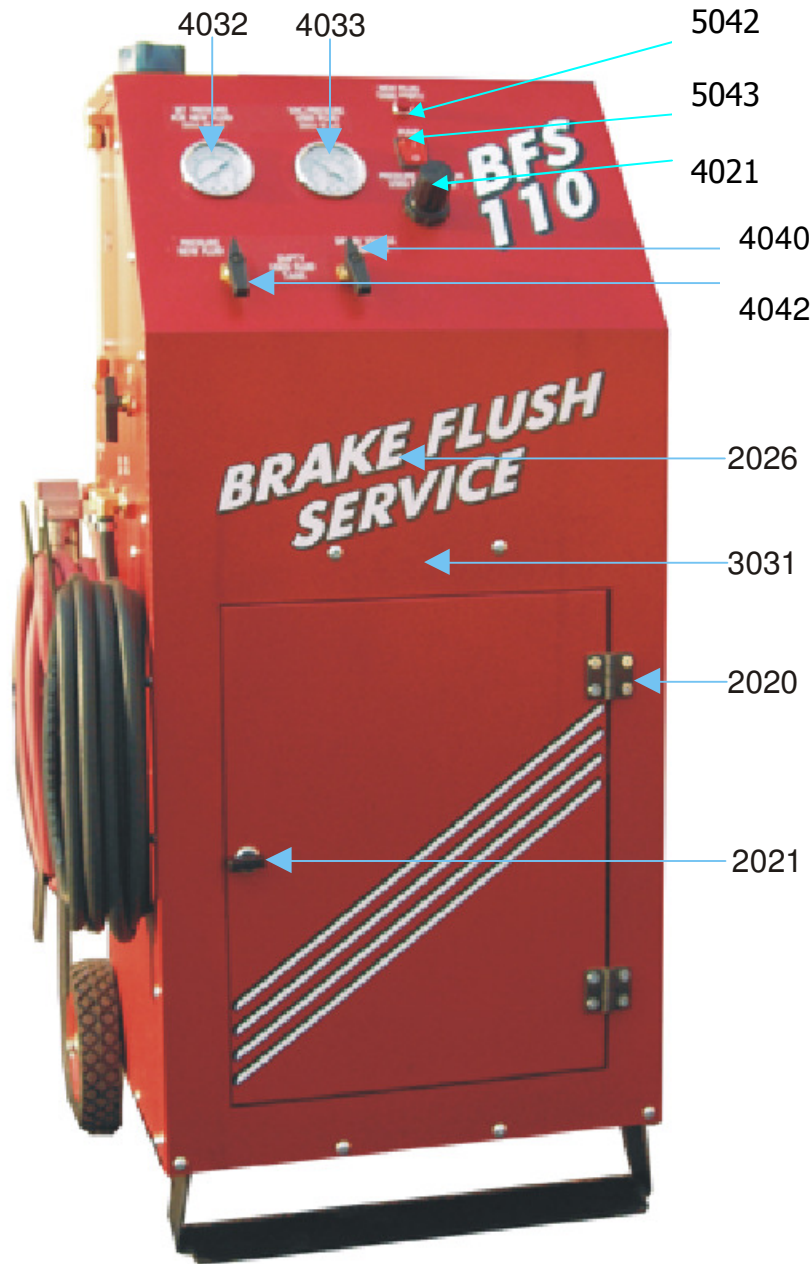


BFS 110 Brake Flush Service



Inside Back Left View



- 6004
- 5042
- 5043
- 5026
- 4021
- 5024
- 4040
- 5044
- 5045 (Fuse inside 5044)
- 6093
- 3034
- 5040
- 5041
- 5018/19

Inside Back Right View

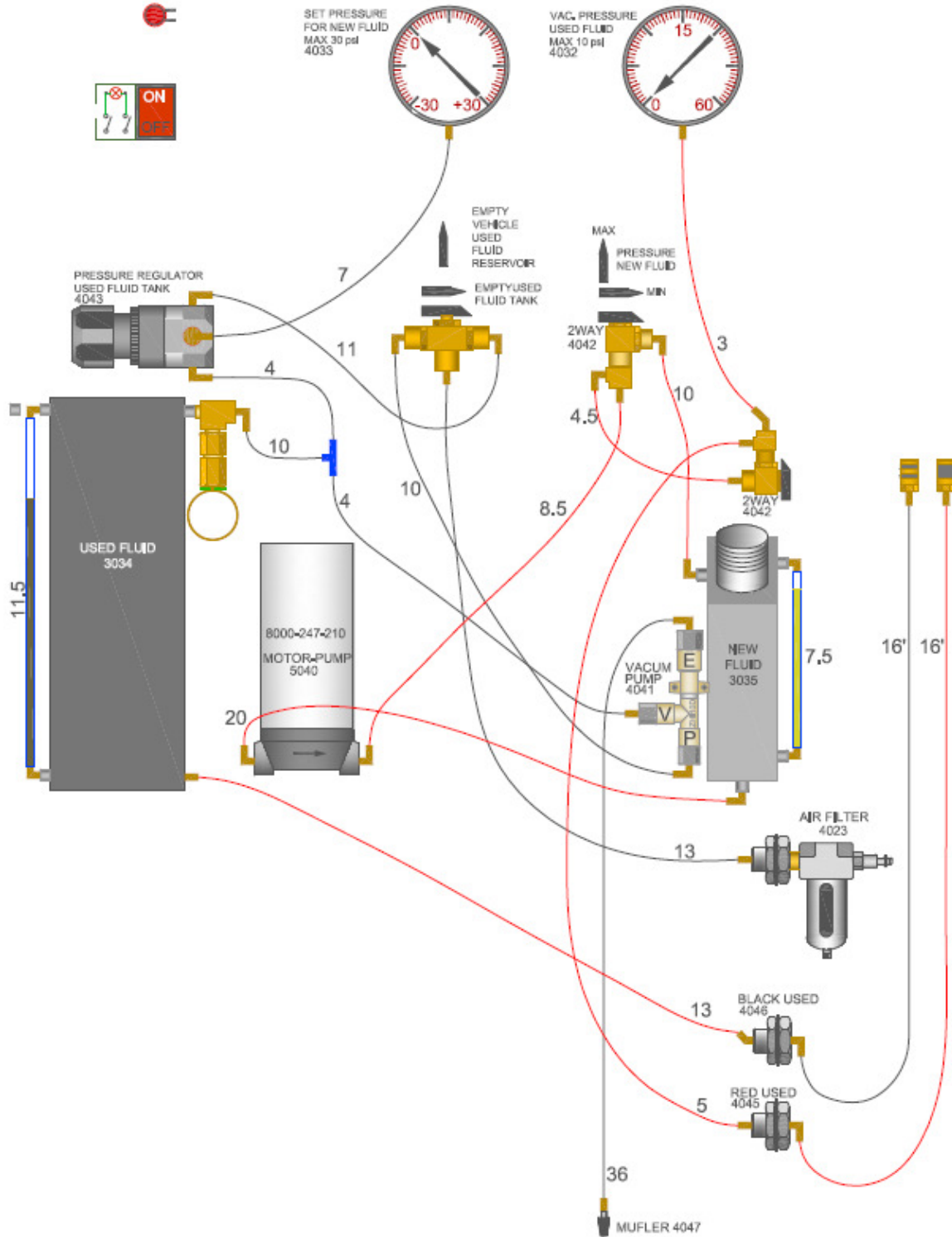


- 6004
- 4047
- 6000
- 4041
- 4042
- 3035
- 5046
- 6004
- 2008
- 6092

Hose Lengths



BFS - 110



No Power

- Check battery connectors and power cord.
- Check switch.

Pump runs but no fluid

- Check for obstructions in the tank or inlet hose at the pump.

No vacuum

- Clean muffler and vacuum injector

New Fluid Tank Full but Pump does not start

- Check float switch inside new fluid tank.

BFS 110 Brake Flush Service

3.1a

Fasteners

1000	Quadrex Screws for body assembly	
1005	Acorn Nut	
Hardware		
2008	Power Cord Strain Relief	
2015	Fill Cap Plastic	
2020	Hinge Nylon Butt Hinge	
2021	Door Clasp	
2022	Metal Pull Handle	
2023	Wheels 6 x 1.5	
2024	Aluminium Axle	
2025	Steel Wheel Cap	
2026	Decal Package BFS	
Metal Body Parts		
3030	Bottom Brace	
3031	Metal Body	
3032	Hose Hangers – 1" W x 15"L x 2 1/2"D	
3033	Power Cord Hanger 1" x 11 3/4" x 1"D	
3034	Used Fluid Tank Steel	
3035	New Fluid Tank Stainless Steel	
Plumbing		
4021	43 PSI Regulator	
4022	Water Separator (Air Filter)	
4032	2" 30 psi Gauge	
4033	2" 30 psi Pressure Vacuum	
4040	5 way Ball Valve	
4041	Vacuum Pump 1/8" ports	
4042	2 way 90° Ball Valve (Leak Test)	
4044	3/8 Transparent Nylon Hose	
4045	1/4 Red Hose	
4046	1/4 Black Hose	
4047	1/8 Muffler	

Electrical		
5006	Negative Battery Clamps	
5006-1	Positive Battery Clamp	
5007	Power Cord	
5018/19	Marrets	
5024	5 pin Relay 30 AMP	
5026	Blue Spade Connector	
5040	Motor / Pump	
5041	Pump 8000/8050	
5042	Light (Solico)	
5043	4 Prong Switch w/light	
5044	Fuse Holder 18 gauge	
5045	Fuse 10 amp	
5046	Float Sensor Switch	
Fittings		
6000	1/4" Hose Barb 1/4" Female Thread	
6004	1/4" Hose Barb 1/8" Pipe Thread in a 90°	
6005	1/4" Hose Barb 1/4" Pipe Thread in a 90°	
6024	1/4" Bulkhead Coupler	
6090	New Fluid Quick Connect	
6091	Used Fluid Quick Connect	
6092	1/4" Hose Barb 3/8" Pipe Thread in a 90°	
6093	1/4" Male Tee Nylon	
6095	3/8" Compression 1/8" Male Thread in a 90°	
Assembled Parts		
7003	Battery Clamps (5006) and Cable (5007) Set	
7020	BFS Black Exchange Hose Assembly	
7021	BFS Red Exchange Hose Assembly	

Fitting New Style		
BC01	Chrysler / GM	
BC02	Chrysler / GM	
BC04	BMW Audi Euro	
BC05	Nissan	
BC06	Mazda	
BC09	Honda Accord	
BC10	Nixxan	
BC12	Honda Accord	
BC13	Honda Accord	
BC15	Ford	
BC16	Daihatsu	
BC17	Mitsubishi	
BC18	Nissan	
BC19	Nissan	
BC20	Ford Escape	
BC0813	Universal	
BC11	Chrysler / GM	
BC0712	Universal	
B400	Attach to Bleeder screw to vacuum out fluid	
B500	To vacuum out fluid reservoir	
B600	To fill fluid reservoir	
Optional		
B200	GM/Chrysler	

Fittings Old Style		
B100		
B300		
B400	Attach to Bleeder screw to vacuum out fluid	
B500	To vacuum out fluid reservoir	
B600	To fill fluid reservoir	
B01	Chrysler and other	
B02	Ford and other	
B03	Ford and other	
B04	General Motors	
B05	European and others	
B08	Expandable O-ring Honda and others	
B09	Expandable O-ring Honda	
B10	Toyota and others	
B11	Toyota and others	
Optional		
B200	GM/Chrysler	

3.1b